

## Hogarth Crescent Colliers Wood, SW19 2DW

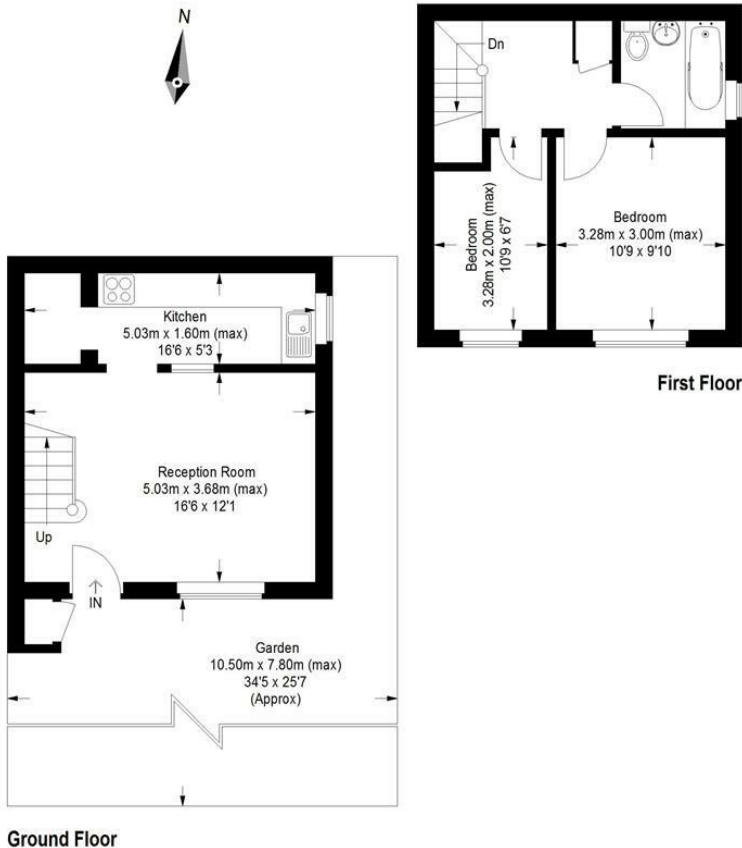
£415,000 Freehold



**This well presented two bedroom modern freehold house with attractive garden is located close to Colliers Wood tube station and town centre. Spacious reception room leading to modern fitted kitchen with good storage. Large double bedroom and good sized single bedroom. Recently refurbished modern bathroom. Loft storage. Located close to superb transport links and excellent local shops and restaurants as well as the popular and quaint Merton Abbey Mills.**

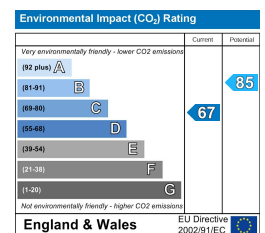
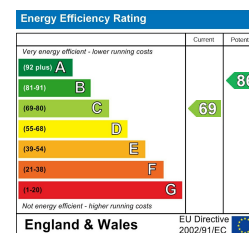
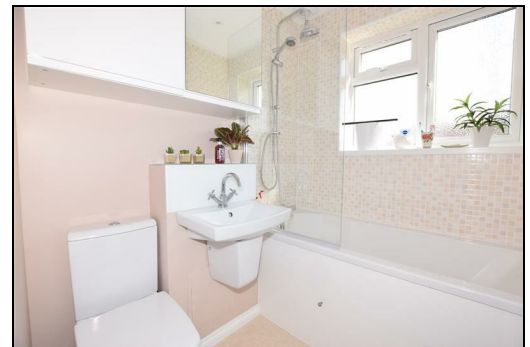
## Hogarth Crescent, SW19

Approximate Gross Internal Area  
Ground Floor = 28.8 sq m / 310 sq ft  
First Floor = 28.1 sq m / 302 sq ft  
Total = 56.9 sq m / 612 sq ft



This floor plan is for representation purposes only and is not drawn to scale. Whilst every attempt has been made to ensure its accuracy measurements are approximate only and should be checked before making any decisions reliant upon them.  
Copyright Bespokeplans.co.uk 2016  
(ID244054)

- Two Bedrooms
- Freehold
- Merton Abbey Location
- Well Presented Throughout
- Close to Transport Links
- EPC Rating C



For Free Mortgage Quote and Best Mortgage Rates, call an Ellisons Mortgage Advisor on 020 8944 9494

Although these particulars are believed to be correct, their accuracy is not guaranteed and they do not form part of any contract.

Ellisons Estate Agents Limited

Registered Office: 4th Floor, Tuition House, St. George's Road, Wimbledon, London SW19 4EU. Registered in England & Wales, company number 7533420